



## ADVANCED OCR TOOL

The advanced OCR tool is a powerful vision software tool able to read challenging alphanumeric strings printed over labels or directly marked (DPM) into industrial products. This new tool ensures robust and reliable reading of hard to read characters under difficult conditions, such as non-uniform background, variable light conditions, and curved surfaces.

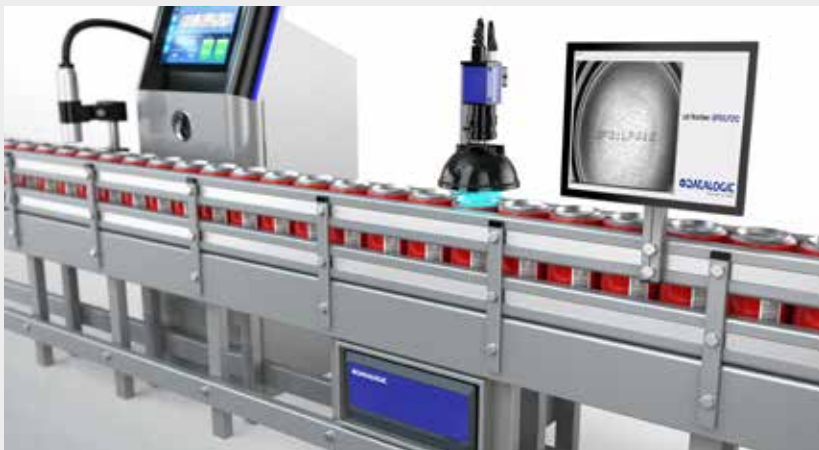
Available with the IMPACT software, Advanced OCR is extremely intuitive featuring quick character training and easy to use string verification modes. Users can segment a string instantly with the auto segmentation capability and then train characters by typing them in. Two string verification modes, OCR and OCV, together with three different options for verify string inputs guarantee full application flexibility.

Advanced OCR is the best solution for reading ink-jet printed dot matrix strings on package labels and embossed characters on mechanical parts or components, respectively in the Food & Beverage and Automotive industries.



VISION

## APPLICATIONS

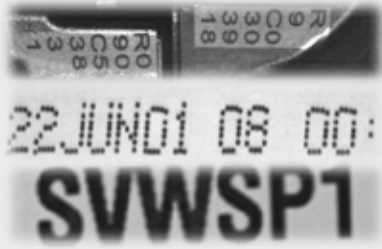


The outstanding Advanced OCR software algorithm ensures the highest reading reliability of ink-jet dot matrix characters on challenging surfaces (i.e. cans, bottles,..)



IMPACT Advanced OCR tool is able to effectively read serial numbers directly marked on automotive parts, even when surfaces are strongly reflective, rough and curved.

## PRODUCT HIGHLIGHTS



### Effective with difficult to read characters

The Advanced OCR tool is highly effective with ink-jet dot matrix or engraved characters. It is also able to read low contrast and slanted characters. When characters are trained, it recognizes them even if they are not well spaced and touching each other.



### Robust against variable background and difficult light conditions

Advanced OCR delivers robust and reliable readings even with variable background or corrupted by noise. It ensures excellent performances even with difficult light condition.



### Reliable with challenging codes

Advanced OCR tool works perfectly with distorted printings, embossed and marked codes, as well as easily perishable labels. It is the best solutions for the most challenging codes even on irregular surfaces.



### Easy of use and fast OCR application development

Advanced OCR is extremely intuitive ensuring quick characters training and easy management of the database of fonts. OCR and OCV modes together with three different string verification options deliver full application flexibility.

## MODEL SELECTION AND ORDER INFORMATION

DESCRIPTION	ORDER N°
Dongle, IMPACT, OCR*	93ACC0186
License, OCR, Processor	95A906998

\* It can only be ordered for MX-E vision processors.

The tool license is sold on a per-processor basis i.e. once enabled on a Vision Processor it can be used with all connected cameras